



# ANNUAL LISTING OF FEDERALLY OBLIGATED PROJECTS

## FISCAL YEAR 2011

(OCT 1, 2010 TO SEP 30, 2011)



Capital Region Planning Commission

## **Purpose of this Report**

Federal Law, under the Safe, Accountable, Flexible, Efficient Transportation Equity Act: A Legacy for Users (SAFETEA), requires the Baton Rouge Metropolitan Organization, hereafter referred as "BRMPO", to publish a listing of projects using federal funds obligated in the previous federal fiscal year (FFY). The annual listing provides a record of project delivery for the previous year. The listing is also intended to increase the awareness of government spending on transportation projects to the public. Obligation of federal funds means that a project has received federal commitment for reimbursement, and does not necessarily mean that the project was initiated or completed in that year or indicate the total cost of that project.

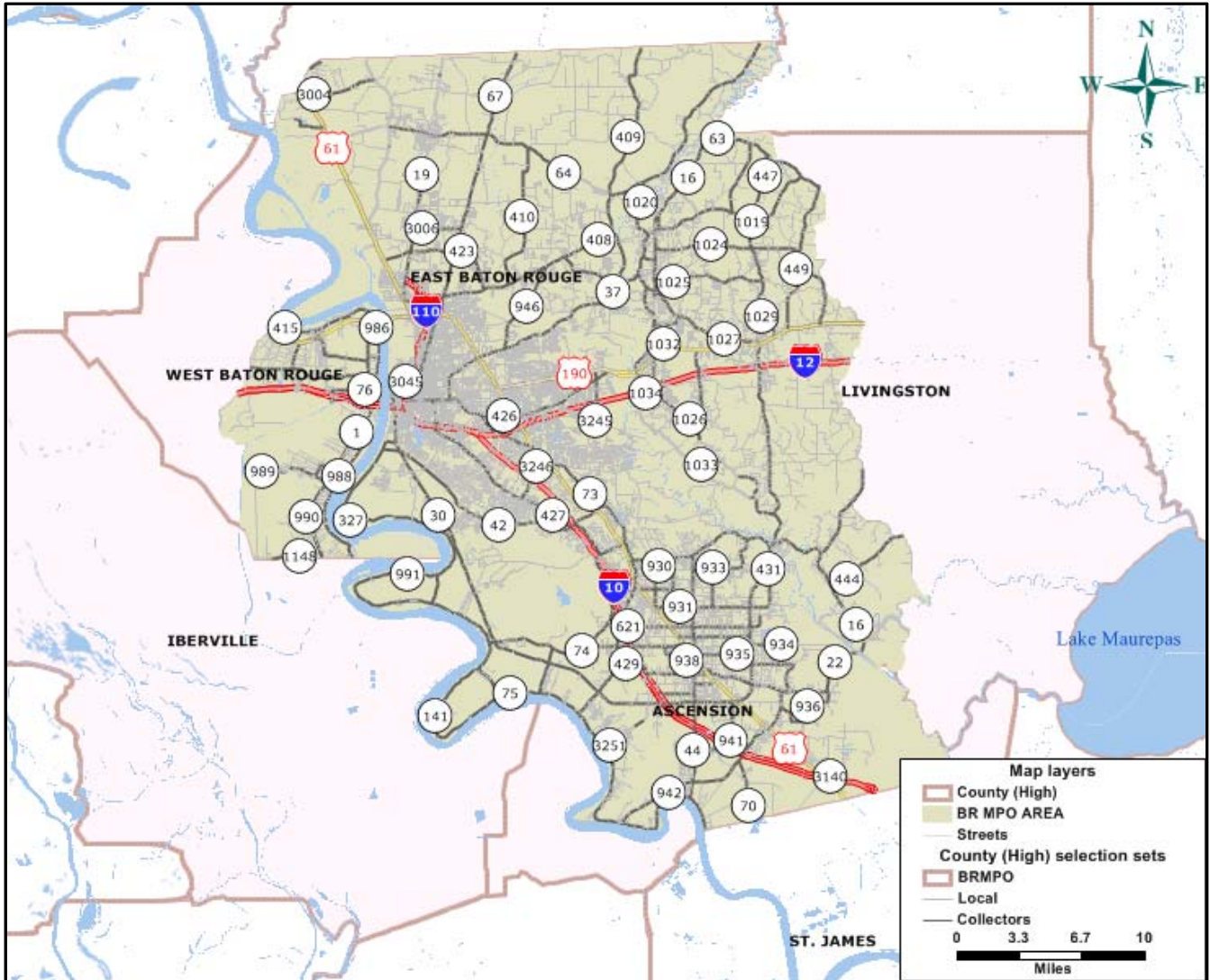
This document is available for download on the CRPC website at <http://www.crpc-la.org>, under transportation planning documents.

## **Background**

Capital Regional Planning Commission is the Metropolitan Planning Organization (MPO) for the Baton Rouge urbanized area. Every metropolitan area with a population of more than 50,000 persons has a designated MPO in order to qualify for federal highway and transit funding. CRPC, acting in its capacity as the MPO, has responsibility for planning, programming, and coordinating federal-aid transportation investments within the Baton Rouge urbanized area. As the MPO, CRPC is statutorily mandated to assess the transportation needs and deficiencies of the region with direction from public officials; citizens; modal representatives; and federal, state and local planning departments. In its capacity as the BRMPO, the CRPC utilizes two committees: the Transportation Policy Committee and the Technical Advisory Committee, which consists of officials from Ascension, East Baton Rouge, Livingston and West Baton Rouge Parishes.

The Transportation Policy Committee (TPC) provides policy guidance for the development, coordination, and implementation of the multi-modal transportation plan for the area and its supporting documents. The TPC is made up of local elected officials and representatives from relevant government agencies.

# Five Parish BRMPO Transportation Network



## **Regional Transportation Plan**

As the agency responsible for transportation planning in the five parish Baton Rouge metropolitan area, CRPC is responsible for adopting the Baton Rouge urbanized area's regional transportation plan. The current plan, known as Baton Rouge Metropolitan Transportation Plan, also called as Long Range Transportation Plan (LRTP), was adopted by the Commission in December, 2007. The plan specifies a detailed set of investments and strategies throughout the region from 2009 through 2032 to maintain, manage and improve the surface transportation network. Updated every four years to reflect new planning priorities and changing projections of growth and travel demand, the long-range plan must be based on a realistic forecast of future revenues. Taken as a whole, the projects included must help improve regional air quality.

The LRTP includes the needed transportation system and the fiscally-constrained RTP. The fiscally-constrained RTP, required by federal law, identifies the multimodal transportation system that can be achieved over a minimum 20-year planning horizon with the “reasonably available” financial resources over that time. Federal law requires the fiscally-constrained plan to be updated every five years.

The LRTP incorporates policy considerations and related long-term impacts. Analysis of land use changes, population growth and density patterns, economic development and commercial and residential zoning help identify and rank projects. All regionally significant projects are identified in the plan regardless of their funding source; and, in many cases, projects are funded with combinations of state, federal, and local funds.

## **Transportation Improvement Program**

The TIP is the adopted list of public transit, roadway, bicycle, pedestrian, and air quality projects that will receive federal transportation funds in the near future. The TIP also includes the projects that lies outside the MPO study area and within the five parish region that are intended to only se state funds. The TIP implements the fiscally-constrained LRTP. BRMPO's TIP covers a four-year period, though specific projects and their funding levels are usually identified for the first three or four-year period.

The 2010-2014 TIP was adopted on August 17, 2010, and has been amended regularly since adoption. The projects in this obligation report are from the 2010-2014 TIP. The 2010-2014 TIP defines the projects eligible for federal funding in FY11, which covers the period from October 1, 2010 to September 30, 2011.

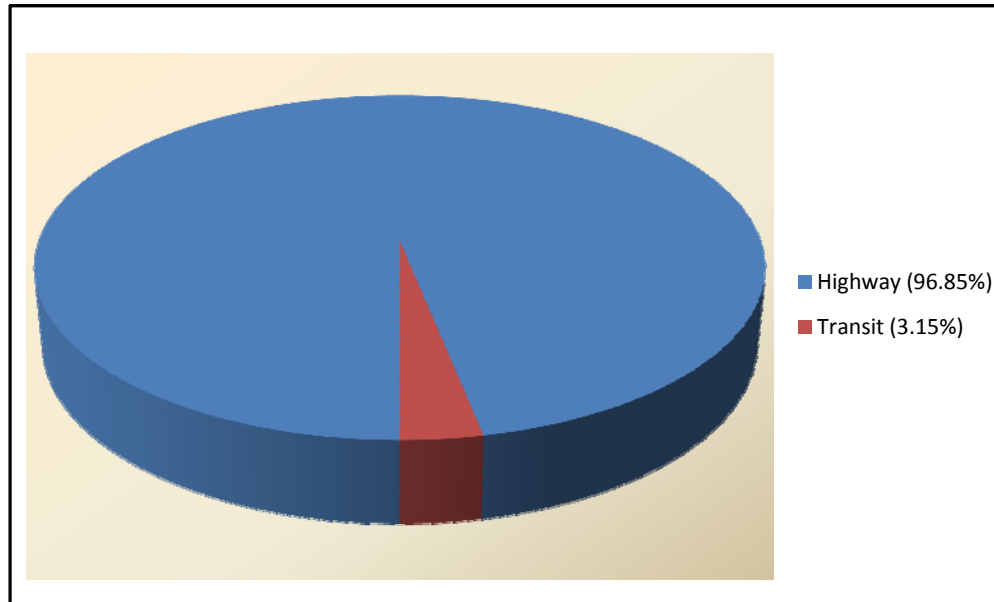
## **Public Involvement**

CRPC aims to proactively engage the public in the regional transportation planning process and embraces federal requirements that MPOs provide the public with complete information, timely public notice, full public access to key decisions, and early and continuing involvement in developing the LRTP, TIP, and other products. CRPC's public involvement strategies include presenting information and educating the public, continually soliciting public input, helping information flow between the public and decision makers, and considering and responding to public concerns.

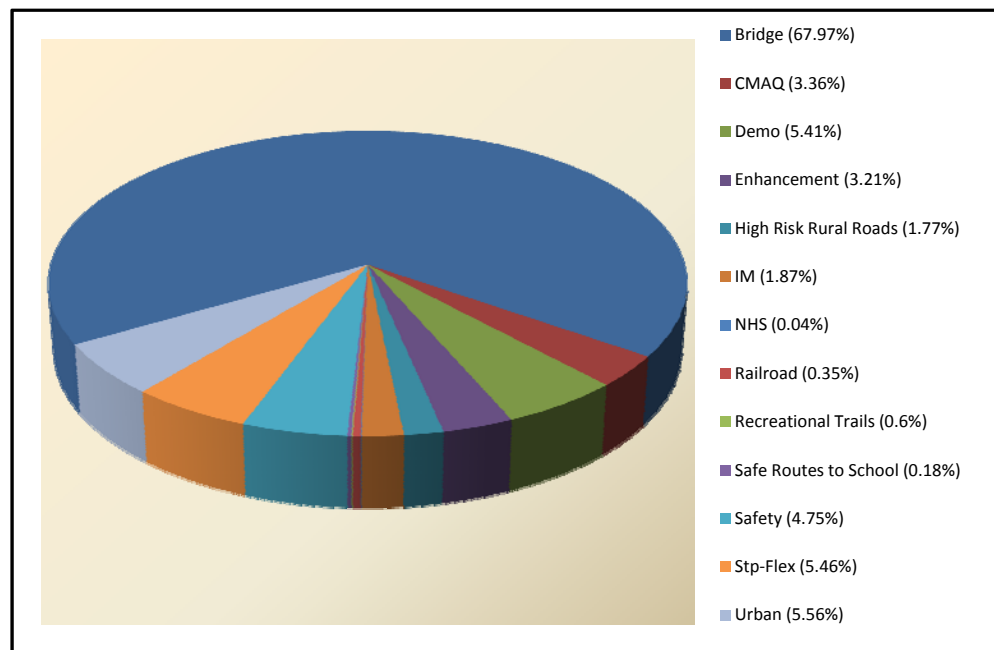
## **Summary of Projects**

A total of \$141.35 million was obligated in FY 2011 for 64 transportation projects. Of this, \$136.9 million (96.85%) was for highway/bridge projects and \$4.45 million (3.15%) for transit projects. The chart below illustrates these percentages:

*FY 2011 Federally Obligated Projects Summary*

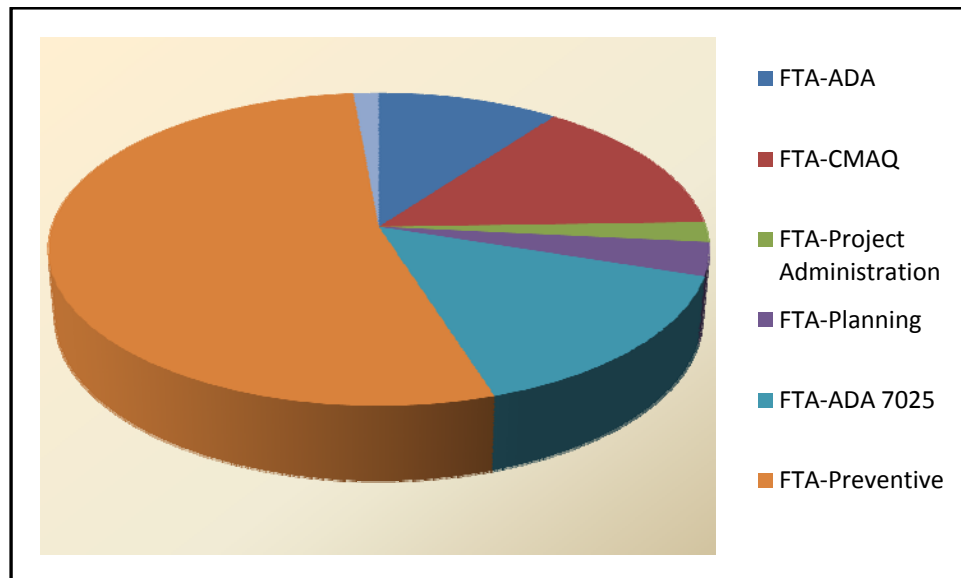


*FY 2011 Federally Obligated Highway/Bridge Projects by Funding Category*



The largest percentage of highway/bridge funds (68% total) obligated was the HBP Apportioned 85% On/Off Federal-aid Highways (L1CE) category of funding. Majority of these funds were used to fund US-190 and I-10 Mississippi Bridges.

## *FY 2011 Federally Obligated Transit Projects by FTA Funding Category*



### **Obligation Report**

This report is organized by project phase for highway/bridge projects and funding category for transit projects. The TIP identification (ID), project name, description, funding source and the total obligation amount are shown for each project. The TIP ID is a unique number given to each project selected for inclusion into the BRMPO's TIP. A brief description of each project is provided. The obligation is the federal share for that particular TIP project in the federal fiscal year. The obligation amounts for each of the projects are added up to show the total obligation by project phase.

While federal funding is included in this report, no local or state funds are reported. In FY2011, federal funding was distributed through the following TIP categories:

**Highway Bridge Program On-System (HBP ON) and Highway Bridge Program Off-System (HBP OFF)** are federal funds used for the replacement, rehabilitation or widening of any federal aid facility on-system or off-system, respectively.

- **National Highway System (NHS)** funding sources are restricted to the NHS network which consists of Interstate, US and State Highways, and major arterials streets serving urban area connectivity, access to ports, airports, and rail terminals.
- **Interstate Maintenance Funds (IM)** program provides funding for resurfacing, restoring, rehabilitating and reconstructing most routes on the Interstate System.
- **Surface Transportation Program (STP >200k)** is used within the metropolitan area to fund roadway reconstruction, rehabilitation, traffic operational improvements, bicycle and pedestrian facilities, and studies.
- **Surface Transportation Program (STP Flex)** is a flexible funding category that is typically used by LaDOTD to fund roadway reconstruction, Intelligent Transportation System (ITS) projects, or bridge or interchange work.
- **Surface Transportation Program (STP HAZ) funding** is used to correct or eliminate hazardous conditions, improve traffic safety, and replace and upgrade traffic signal equipment.
- **State Cash – General Fund (ST CASH)** are budgeted from the state’s general fund to be used at the discretion of the legislature.
- **National Corridor Infrastructure Improvement Program (NCIIP)** provides funding for construction of highway projects in corridors of national significance to promote economic growth and international trade.
- **FTA Section 5307** funds are used for capital, operating assistance, preventive maintenance and planning purposes for mass transportation improvements in urbanized areas.
- **FTA Section 5309** funds are used for mass transit capital project improvements, as well as transit discretionary grants awarded congressionally for particular transit-related projects.
- **FTA Section 5310** funds are used to provide capital assistance to private, non-profit organizations in meeting the transportation needs of the elderly or persons with disabilities, i.e., procurement of handicapped vans.
- **FTA Section 5316 Job Access and Reverse Commute (JARC)** grants fund projects and activities that create or enhance transportation services designed to connect low-income individuals to jobs or other employment related activities. JARC grants also support reverse commute projects. Activities funded by JARC must derive from the regional Coordinated Human Services Transportation Plan.

- **FTA Section 5317 New Freedom** grants fund projects that create or enhance public transportation services and remove barriers for the disabled. New Freedom projects must be new (i.e., non-operational and/or unfunded prior to 2005) and must exceed the current requirements of the Americans with Disabilities Act of 1990. Activities funded by New Freedom must derive from the regional Coordinated Human Services Transportation Plan.

Some projects include a mixture of different TIP funding categories, and thus one project line under one funding source does not necessarily equal the total obligated funding for that project. The table below is based on records obtained from LaDOTD, FHWA, and FTA, as BRMPO does not directly participate in the obligation process.

**Annual Listing of Federally Obligated Projects for Fiscal Year 2011 (Highway)**

<b>Federal Project Number</b>	<b>Funding Code Description</b>	<b>Project Description</b>	<b>Federal Funds Authorized</b>	<b>Total Cost of Project</b>
H000343	Bridge	US 190; BEG LOG MILE 0.000 END LOG MILE 1.110; MIS	\$ 81,820,325.91	\$ 102,279,407.38
H000357	NHS	RT TURN LANES US190 @ LA1145 & LA415 @LA9	\$ 1,600.00	\$ 157,471.12
H000357	Stp-Flex	RT TURN LANES US190 @ LA1145 & LA415 @LA9	\$ 211,418.71	\$ 264,273.39
H000467	Stp-Flex	US 190 - Jct Local Road - East Jct LA 63	\$ 2,471,086.81	\$ 3,088,858.51
H000467	High Risk Rural Roads	US 190 - Jct Local Road - East Jct LA 63	\$ 794,856.76	\$ 883,174.18
H000467	High Risk Rural Roads	US 190 - Jct Local Road - East Jct LA 63	\$ 970,014.35	\$ 1,077,793.72
H000467	High Risk Rural Roads	US 190 - Jct Local Road - East Jct LA 63	\$ 663,251.85	\$ 736,946.50
H001234	Bridge	LA 1 DISTRICT 61 PORT ALLEN CANAL BRIDGE REHABILIT	\$ 274,556.80	\$ 343,196.00
H001592	Stp-Flex	US61 CONSTRUCT LEFT TURN LANE ON LA 73 AT LA 429 -	\$ 737,773.34	\$ 922,216.68
H001597	CMAQ	LA 73 WIDENING (US 61 - I-10) - WIDEN LA 73 TO 3 L	\$ 4,093,600.00	\$ 19,079,316.83
H001616	Urban	LA 429/LA 3038 @ LA 44 INT. OF LA 429/LA 3	\$ 86,520.00	\$ 108,150.00
H002274	Stp-Flex	LA 19 - LA 64 - JCT. LA 64; EAST FELICIANA PARISH	\$ 2,724,357.21	\$ 3,405,446.51
H002290	Urban	DISTRICT 61 E BATON ROUGE PARISH LA 64 BEG. LOG MI	\$ 5,020,800.00	\$ 6,276,000.00
H002310	Stp-Flex	EAST FELICIANA PARISH LINE - JCT. 448 -NORTH JCT.	\$ 277,664.00	\$ 347,080.00
H002370	Demo	LA 42 (US 61 - LA 44); BEG LOG MILE 0.00 END LOG M	\$ 472,347.61	\$ 590,434.51
H002370	Enhancement	LA 42 (US 61 - LA 44); BEG LOG MILE 0.00 END LOG M	\$ 3,956,750.00	\$ 4,165,000.00
H002370	Safety	LA 42 (US 61 - LA 44); BEG LOG MILE 0.00 END LOG M	\$ 3,748,500.00	\$ 4,165,000.00
H002370	Demo	LA 42 (US 61 - LA 44); BEG LOG MILE 0.00 END LOG M	\$ 5,830,444.00	\$ 7,288,055.00
H002370	Demo	LA 42 (US 61 - LA 44); BEG LOG MILE 0.00 END LOG M	\$ 245,000.00	\$ 245,000.00
H002397	Demo	I-12; BEG LOG MILE 2.000, 11.80 END LOG MILE 3.080	\$ 373,593.36	\$ 466,991.70
H002414	Stp-Flex	CONSTRUCT AN EASTBOUND LEFT TURN LANE ON LA 74	\$ 526,286.33	\$ 657,857.92
H002437	Enhancement	PENDARVIS LN -AYDELL ST - WALKER LANDSCAPING	\$ 113,050.00	\$ 137,600.00
H003026	IM	I-10; IBERVILLE P/L-W END OF MS RIVER BR - ASPH TR	\$ 1,985,192.75	\$ 2,205,769.72
H003028	Bridge	I-10 MISSISSIPPI RIVER BRIDGE	\$ 6,831,561.52	\$ 8,539,451.90
H003028	Stp-Flex	I-10 MISSISSIPPI RIVER BRIDGE	\$ 225,485.76	\$ 281,857.20
H003028	Bridge	I-10 MISSISSIPPI RIVER BRIDGE	\$ 6,831,561.52	\$ 8,539,451.90
H003028	Stp-Flex	I-10 MISSISSIPPI RIVER BRIDGE	\$ 225,485.76	\$ 281,857.20
H003420	Enhancement	I-12/SATSUMA ROAD INTERCHANGE	\$ 256,337.91	\$ 269,829.38

<b>Federal Project Number</b>	<b>Funding Code Description</b>	<b>Project Description</b>	<b>Federal Funds Authorized</b>	<b>Total Cost of Project</b>
H003424	IM	APPROACH SLAB REPAIRS AT VARIOUS BRIDGES I-12 LIVI	\$ 579,143.25	\$ 643,492.50
H004100	NHS	I-10; BEG LOG MILE 0.000 END LOG MILE 0.010; LA 41	\$ -	\$ 1,433,760.00
H006079	Bridge	LANIER DR BRIDGE OVER ROBERTS CANAL -DISMANTLE & D	\$ 765,534.82	\$ 956,918.52
H006080	Bridge	WOODLAKE DRIVE - DISMANTLE & DISPOSE OF EXISTING B	\$ 1,812,959.72	\$ 2,266,199.65
H006078	Bridge	ELM GROVE GARDEN DRIVE BRIDGE	\$ 721,670.23	\$ 902,087.79
H006554	Safety	EDEN CHURCH ROAD (US 190 - LA 1026); DOT NO. 303-2	\$ 2,749,473.09	\$ 3,054,970.10
H006083	Bridge	DISMANTLE AND DISPOSE OF EXIST. BRIDGE; BRIDGE REP	\$ 732,519.08	\$ 915,648.85
H006555	Safe Routes to School	SOUTH WALKER ELEMENTARY SIDEWALK PROJECT	\$ 9,380.00	\$ 9,380.00
H006555	Safe Routes to School	SOUTH WALKER ELEMENTARY SIDEWALK PROJECT	\$ 240,820.00	\$ 240,820.00
H007064	Urban	MILLERVILLE ROAD (I-12 - HARRELL'S FERRY ROAD) MAJ	\$ 2,186,867.12	\$ 2,733,583.90
H007703	Recreational Trails	DENHAM SPRINGS COMMUNITY RECREATIONAL TRAIL PARK	\$ 76,500.00	\$ 95,625.00
H008415	Demo	DEMO - INFORMATION CENTER AT SOUTHERN UNIVERSITY	\$ 488,410.17	\$ 2,397,476.92
H009070	Enhancement	I-12:LANDSCAPING BEAUTIFICATION - LANDSCAPING IN V	\$ 71,926.40	\$ 75,712.00
H009099	Bridge	LEEVE ACCESS ROAD OVER BORROW PIT P24-30241-91307-	\$ 99,960.00	\$ 124,950.00
H009117	Urban	TATE ROAD WIDENING & OVERLAY	\$ 315,814.48	\$ 394,768.10
H009285	Stp-Flex	BATON ROUGE MOTORIST ASSISTANCE PATROL	\$ 304,000.00	\$ 380,000.00
H009285	CMAQ	BATON ROUGE MOTORIST ASSISTANCE PATROL	\$ 504,000.00	\$ 630,000.00
H971014	Railroad	BRIGHTSIDE DRIVE; DOT NO. 302-948D; RR SIGNAL NEED	\$ 355,345.00	\$ 355,345.00
H971016	Railroad	DEAN LEE DRIVE; DOT NO. 302-949K; RAILROAD SIGNALI	\$ 70,643.00	\$ 70,643.00
H971017	Railroad	BOB PETIT BLVD; DOT NO. 302-946P; MOVE CANTS FROM	\$ 55,407.00	\$ 55,407.00
H971777	NHS	KCS WILL HAVE TO MOVE GATE IN PREP FOR 450-10-0159	\$ 52,936.00	\$ 66,170.00
<b>TOTAL</b>				<b>\$ 136,905,684</b>

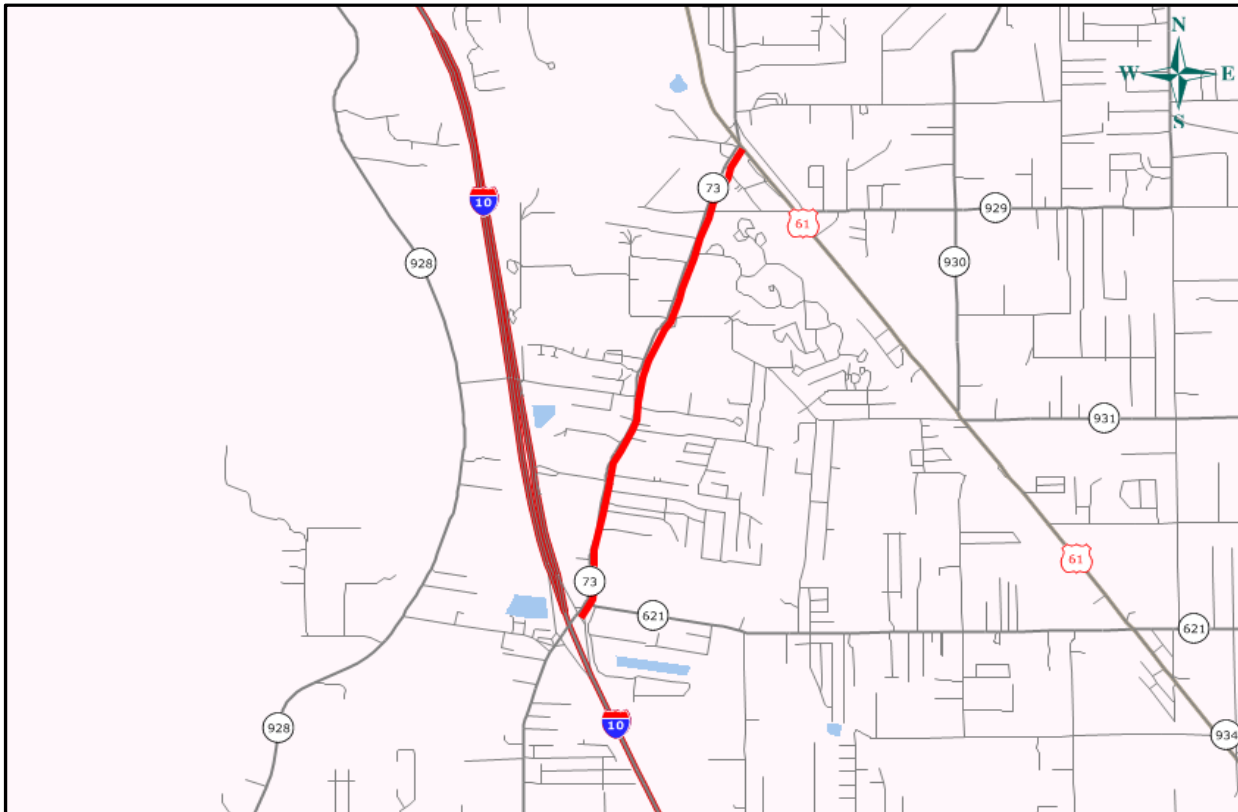
***Annual Listing of Federally Obligated Projects for Fiscal Year 2011 (Transit)***

<b>ID</b>	<b>Project Name</b>	<b>Description</b>	<b>Funding Source</b>	<b>Obligations</b>
<b><i>FTA Section 5307 Projects</i></b>				
5307-2011-01	PREVENTIVE MAINTENANCE	Capital	FTA Section 9	\$2,381,936
5307-2011-02	PLANNING	Planning	FTA Section 9	\$153,156
5307-2011-03	ADA PARA-TRANSIT SERVICE	Operations	FTA Section 9	\$669,681
5307-2011-05	PROJECT ADMINISTRATION	Administration	FTA Section 9	\$91,859
<b><i>FTA CMAQ</i></b>				
L.000045	SEASONAL AND NEW SERVICES	Capital	CMAQ	\$636,818
<b><i>FTA Section 5316 Projects</i></b>				
5316-2011	JARC FUNDING	Extended Hours Service	FTA Section 3	\$62,939
<b><i>FTA Section 5317 Projects</i></b>				
5317-2011	NEW FREEDOM	Extended Hours Service ADA	FTA Section 3	\$453,750
<b>TOTAL</b>				<b>\$ 4,450,139</b>

## **INDIVIDUAL PROJECT TRACKING SHEETS**

To aid in understanding the detailed project listings worksheets, significant TIP programmed projects are individually referenced through project tracking sheets. Minor overlay and geometric improvements do not have tracking sheets developed for them. Tracking sheets contain the mapped location of the project improvement, project narrative, funding sources and cost estimates by construction project phase.

<b>LA 73 WIDENING</b>		<b>TIP_NEW_ID #</b>	<b>H.001597</b>			
<b>PROJECT DESCRIPTION:</b> LA 73 Widening between US 61 and I-10 to 3 lanes and construction of Urban Drainage.		<b>TIP_OLD_ID #</b>	<b>077-02-0020</b>			
		<b>PARISH:</b>	<b>ASC</b>			
		<b>CITY/TOWN:</b>	<b>N/A</b>			
<b>TRAFFIC VOL./AADT:</b> 19,478	<b>2032:</b> 26,195	<b>FUND:</b>				
<b>NO. OF LANES EXISTING:</b> 2	<b>PLANNED:</b> 4	<b>LADOTD DISTRICT</b>	<b>61</b>			
<b>LOCAL ROAD#:</b> Old Jefferson Hwy.	<b>STATE/US ROAD#:</b> LA 73	<b>LENGTH (MI):</b>	<b>2.35</b>			
<b>COMMENTS/REMARKS</b>						
Local Funds \$3000K, CMAQ Funds \$4,300K.						
<b>PROJECT PHASE</b>	<b>\$ SOURCE</b>	<b>FY 2011</b>	<b>FY 2012</b>	<b>FY 2013</b>	<b>FY 2014</b>	
ENGINEERING						
RIGHT-OF-WAY						
UTILITIES						
CONSTRUCTION	STGEN,CMAQ,LOCAL	\$23,301,000				
CONTINGENCY		\$2,330,100				
<b>TOTAL COST</b>		<b>\$25,631,100</b>				
<b>FEDERAL SHARE</b>		\$3,784,000				
<b>STATE SHARE</b>		\$17,601,100				
<b>LOCAL SHARE</b>		\$4,246,000				
<b>REVISION HISTORY</b>						
Date	Revision Details					

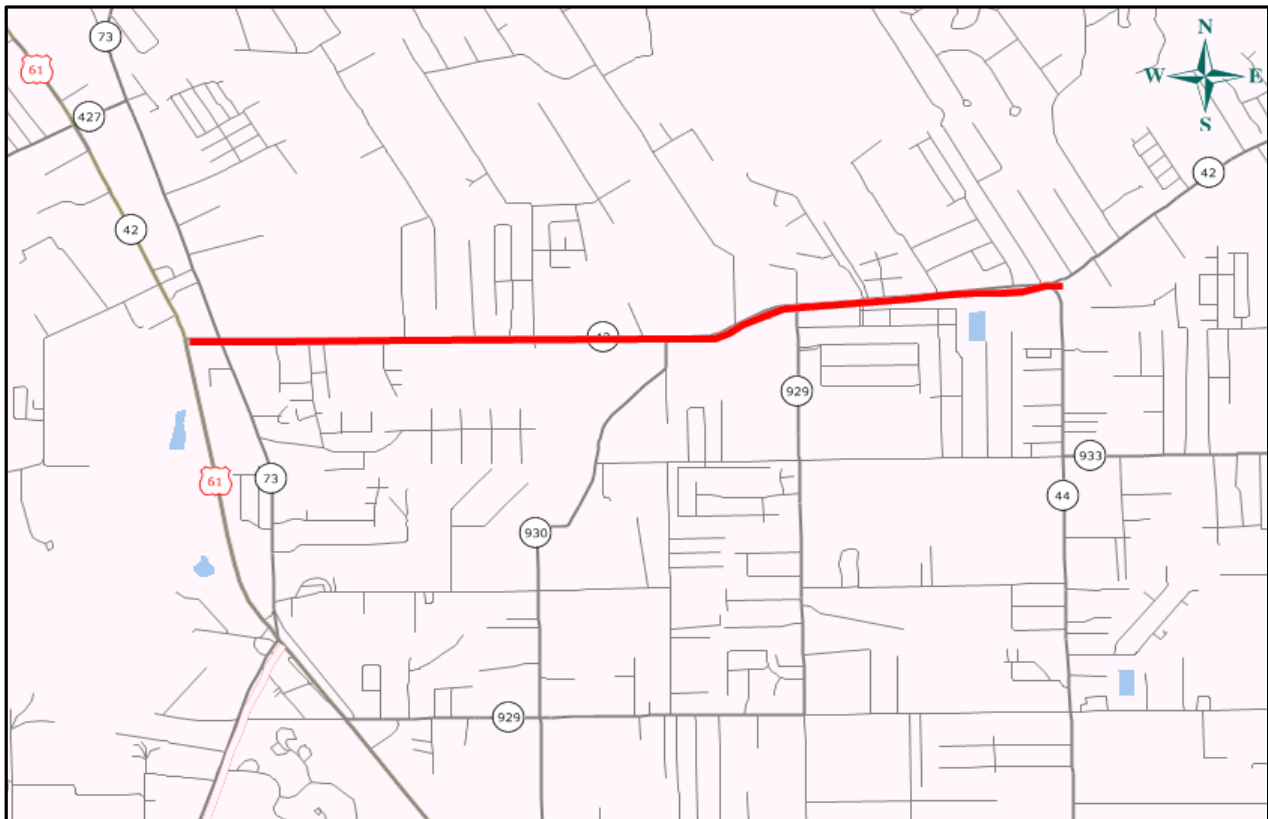




<b>LA 64 CENTER TURN LANE</b>		<b>TIP_NEW_ID #</b>	<b>H.002290</b>		
<b>PROJECT DESCRIPTION:</b> Construction of a center turn lane on LA 64 between LA 19 and McHugh Rd		<b>TIP_OLD_ID #</b>	<b>253-02-0025</b>		
		<b>PARISH:</b>	<b>EBR</b>		
		<b>CITY/TOWN:</b>	<b>N/A</b>		
<b>TRAFFIC VOL./AADT:</b> N/A	<b>2032:</b> N/A	<b>FUND:</b>			
<b>NO. OF LANES EXISTING:</b> 2	<b>PLANNED:</b> 4	<b>LADOTD DISTRICT</b>	<b>61</b>		
<b>LOCAL ROAD#:</b> N/A	<b>STATE/US ROAD#:</b> LA 64	<b>LENGTH (MI):</b>	<b>0.75</b>		
<b>COMMENTS/REMARKS</b>					
This project is a Local Project funded through Green Light Plan, Transportation and Street Improvements Program for East Baton Rouge Parish.					
<b>PROJECT PHASE</b>	<b>\$ SOURCE</b>	<b>FY 2011</b>	<b>FY 2012</b>	<b>FY 2013</b>	<b>FY 2014</b>
<b>ENGINEERING</b>					
<b>RIGHT-OF-WAY</b>	STP>200K		\$5,400,000		
<b>UTILITIES</b>	STP>200K		\$876,000		
<b>CONSTRUCTION</b>	HSIP		\$4,300,000		
<b>CONTINGENCY</b>			\$430,000		
<b>TOTAL COST</b>			<b>\$11,006,000</b>		
<b>FEDERAL SHARE</b>			\$8,804,800		
<b>STATE SHARE</b>			--		
<b>LOCAL SHARE</b>			\$2,201,200		
<b>REVISION HISTORY</b>					
Date	Revision Details				

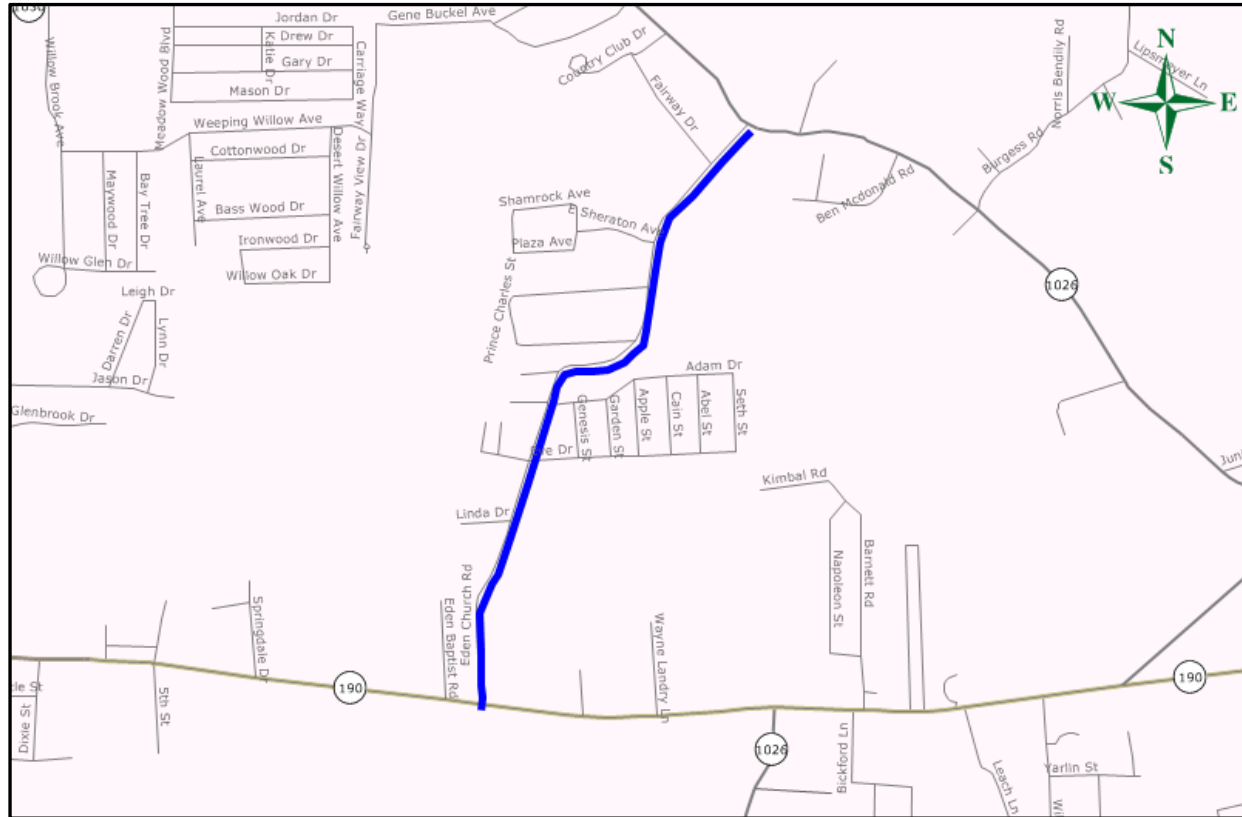


<b>LA 42 WIDENING &amp; IMPROVEMENTS</b>		<b>TIP_NEW_ID #</b>	<b>H.002370</b>		
<b>PROJECT DESCRIPTION:</b> LA 42 Widening and Improvements between US 61 and LA 44.		<b>TIP_OLD_ID #</b>	<b>260-01-0026</b>		
		<b>PARISH:</b>	<b>ASC</b>		
		<b>CITY/TOWN:</b>	<b>N/A</b>		
<b>TRAFFIC VOL./AADT:</b> 23,946	<b>2032:</b> 35,382	<b>FUND:</b>			
<b>NO. OF LANES EXISTING:</b> 2	<b>PLANNED:</b> 4	<b>LADOTD DISTRICT</b>	<b>61</b>		
<b>LOCAL ROAD#:</b> N/A	<b>STATE/US ROAD#:</b> LA 42	<b>LENGTH (MI):</b>	<b>3.5</b>		
<b>COMMENTS/REMARKS</b>					
<b>PROJECT PHASE</b>	<b>\$ SOURCE</b>	<b>FY 2011</b>	<b>FY 2012</b>	<b>FY 2013</b>	<b>FY 2014</b>
ENGINEERING					
RIGHT-OF-WAY	DEMO,HSIP		\$11,000,000		
UTILITIES	HSIP		\$2,875,000		
CONSTRUCTION	DEMO,HSIP,STBONDS		\$16,200,000		
CONTINGENCY			\$1,620,000		
<b>TOTAL COST</b>			<b>\$31,695,000</b>		
FEDERAL SHARE			\$25,180,000		
STATE SHARE			\$220,000		
LOCAL SHARE			\$6,295,000		
<b>REVISION HISTORY</b>					
Date	Revision Details				

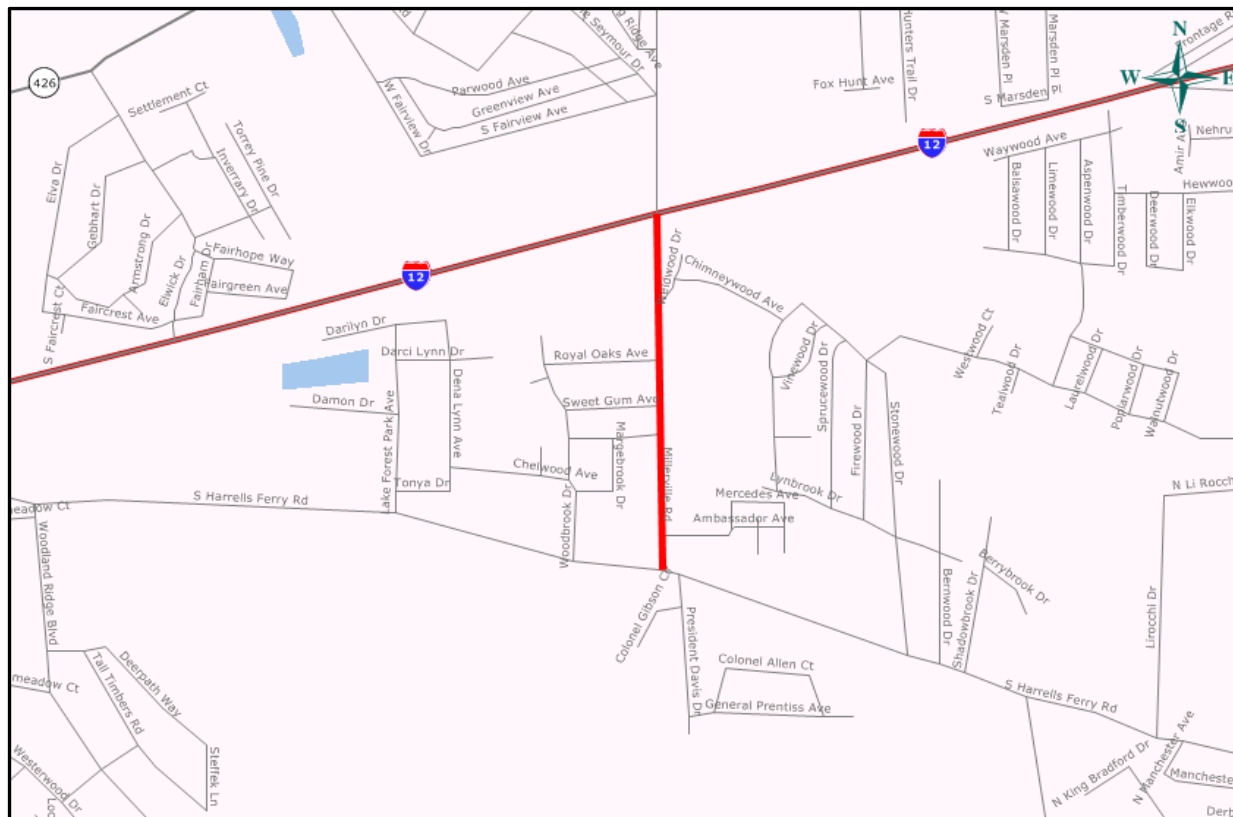




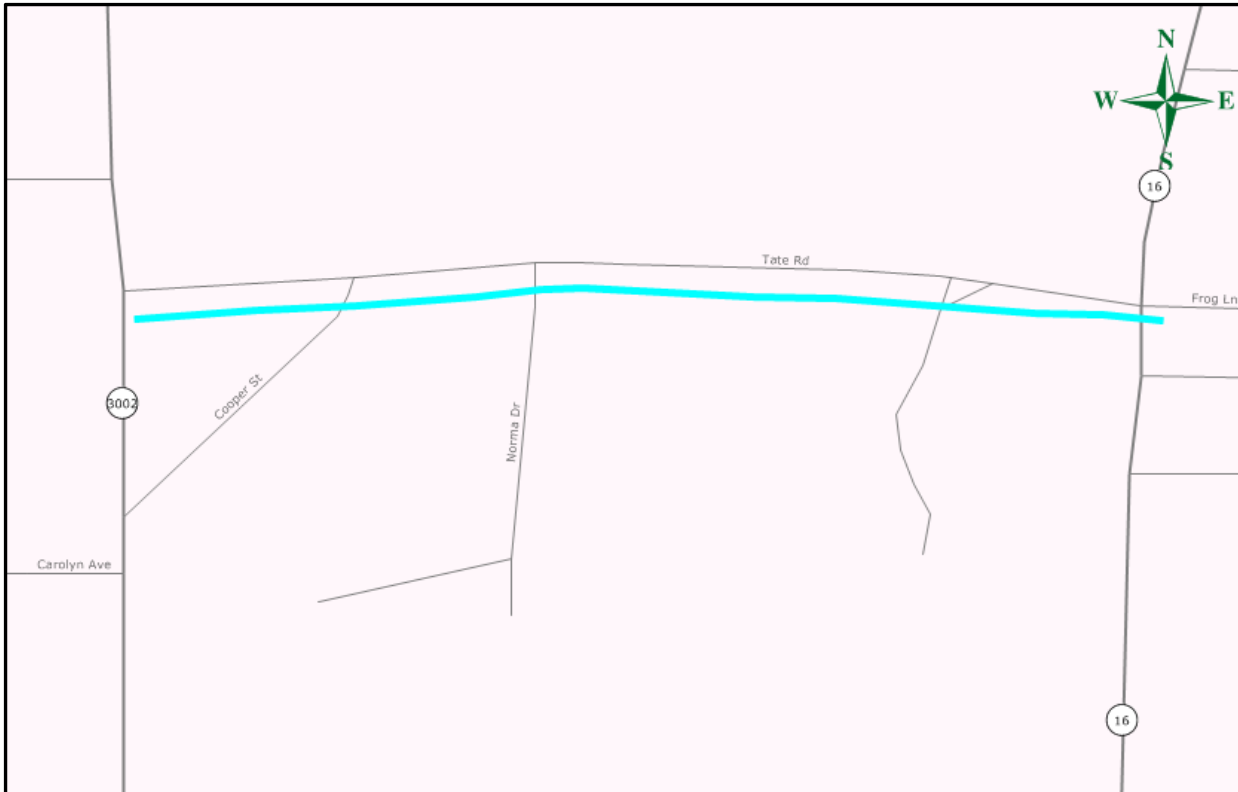
<b>EDEN CHURCH RD IMPROVEMENT</b>		<b>TIP_NEW_ID #</b>	<b>H.006554</b>		
<b>PROJECT DESCRIPTION:</b> Realignment and addition of turn lanes between US 190 and LA 1026.		<b>TIP_OLD_ID #</b>	<b>737-32-0002</b>		
		<b>PARISH:</b>	<b>LIV</b>		
		<b>CITY/TOWN:</b>	<b>N/A</b>		
<b>TRAFFIC VOL./AADT:</b> N/A	<b>2032:</b> N/A	<b>FUND:</b>			
<b>NO. OF LANES EXISTING:</b> N/A	<b>PLANNED:</b> N/A	<b>LADOTD DISTRICT</b>		<b>62</b>	
<b>LOCAL ROAD#:</b> N/A	<b>STATE/US ROAD#:</b> N/A	<b>LENGTH (MI):</b>		<b>1.31</b>	
<b>COMMENTS/REMARKS</b>					
Arra Swap Project, Local - \$3000K					
<b>PROJECT PHASE</b>	<b>\$ SOURCE</b>	<b>FY 2011</b>	<b>FY 2012</b>	<b>FY 2013</b>	<b>FY 2014</b>
ENGINEERING	CMAQ	N/A	N/A	N/A	N/A
RIGHT-OF-WAY	N/A	N/A	N/A	N/A	N/A
UTILITIES	N/A	N/A	N/A	N/A	N/A
CONSTRUCTION	HSIP,LOCAL	\$5,433,000	N/A	N/A	N/A
CONTINGENCY		\$543,300	N/A	N/A	N/A
<b>TOTAL COST</b>		<b>\$5,976,300</b>			
<b>FEDERAL SHARE</b>		\$2,676,300			
<b>STATE SHARE</b>		--			
<b>LOCAL SHARE</b>		\$3,300,000			
<b>REVISION HISTORY</b>					
Date	Revision Details				



<b>MILLERVILLE RD WIDENING</b>		<b>TIP_NEW_ID #</b>	<b>H.007064</b>		
<b>PROJECT DESCRIPTION:</b> Widening of Millerville Rd to 5 lanes between I-12 and S Harrells Ferry Rd.		<b>TIP_OLD_ID #</b>	<b>742-06-0044</b>		
		<b>PARISH:</b>	<b>EBR</b>		
		<b>CITY/TOWN:</b>	<b>N/A</b>		
<b>TRAFFIC VOL./AADT:</b> N/A	<b>2032:</b> N/A	<b>FUND:</b>			
<b>NO. OF LANES EXISTING:</b> 2	<b>PLANNED:</b> 5	<b>LADOTD DISTRICT</b>	<b>61</b>		
<b>LOCAL ROAD#:</b> N/A	<b>STATE/US ROAD#:</b> N/A	<b>LENGTH (MI):</b>	<b>0.60</b>		
<b>COMMENTS/REMARKS</b>					
<b>PROJECT PHASE</b>	<b>\$ SOURCE</b>	<b>FY 2011</b>	<b>FY 2012</b>	<b>FY 2013</b>	<b>FY 2014</b>
<b>ENGINEERING</b>					
<b>RIGHT-OF-WAY</b>					
<b>UTILITIES</b>					
<b>CONSTRUCTION</b>	STP>200K	\$2,700,000			
<b>CONTINGENCY</b>		\$270,000			
<b>TOTAL COST</b>		<b>\$2,970,000</b>			
<b>FEDERAL SHARE</b>		\$2,376,000			
<b>STATE SHARE</b>		--			
<b>LOCAL SHARE</b>		\$594,000			
<b>REVISION HISTORY</b>					
<b>Date</b>	<b>Revision Details</b>				



<b>TATE RD IMPROVEMENTS</b>		<b>TIP_NEW_ID #</b> H.009117			
<b>PROJECT DESCRIPTION:</b> Tate Rd Improvements with additional base widening and resurfacing between Range Ave and Pete's Hwy.		<b>TIP_OLD_ID #</b> N/A			
		<b>PARISH:</b> LIV			
		<b>CITY/TOWN:</b> N/A			
<b>TRAFFIC VOL./AADT:</b> N/A		<b>2032:</b> N/A			
<b>NO. OF LANES EXISTING:</b> N/A		<b>PLANNED:</b> N/A			
<b>LOCAL ROAD#:</b> N/A		<b>STATE/US ROAD#:</b> N/A			
		<b>FUND:</b>			
		<b>LADOTD DISTRICT</b> 62			
		<b>LENGTH (MI):</b> 0.5			
<b>COMMENTS/REMARKS</b>					
<b>PROJECT PHASE</b>	<b>\$ SOURCE</b>	<b>FY 2011</b>	<b>FY 2012</b>	<b>FY 2013</b>	<b>FY 2014</b>
ENGINEERING					
RIGHT-OF-WAY					
UTILITIES	STP>200K	\$5,000			
CONSTRUCTION	STP>200K	\$350,000			
CONTINGENCY		\$35,000			
<b>TOTAL COST</b>		<b>\$390,000</b>			
<b>FEDERAL SHARE</b>		\$312,000			
<b>STATE SHARE</b>		--			
<b>LOCAL SHARE</b>		\$78,000			
<b>REVISION HISTORY</b>					
Date	Revision Details				



<b>I 12 &amp; PETE'S HIGHWAY INTERCHANGE STUDY</b>		<b>TIP_NEW_ID #</b>	H.002397		
<b>PROJECT DESCRIPTION:</b> I 12 and Pete's Highway Interchange Feasibility Study		<b>TIP_OLD_ID #</b>	N/A		
		<b>PARISH:</b>	LIV		
		<b>CITY/TOWN:</b>	N/A		
<b>TRAFFIC VOL./AADT:</b> N/A	<b>2032:</b> N/A	<b>FUND:</b>			
<b>NO. OF LANES EXISTING:</b> N/A	<b>PLANNED:</b> N/A	<b>LADOTD DISTRICT</b>	62		
<b>LOCAL ROAD#:</b> N/A	<b>STATE/US ROAD#:</b> N/A	<b>LENGTH (MI):</b>	N/A		
<b>COMMENTS/REMARKS</b>					
This study is funded through Demo Funds and the total cost is \$466,991.70					
<b>PROJECT PHASE</b>	<b>\$ SOURCE</b>	<b>FY 2011</b>	<b>FY 2012</b>	<b>FY 2013</b>	<b>FY 2014</b>
ENGINEERING	N/A	N/A	N/A	N/A	N/A
RIGHT-OF-WAY	N/A	N/A	N/A	N/A	N/A
UTILITIES	N/A	N/A	N/A	N/A	N/A
CONSTRUCTION	N/A	N/A	N/A	N/A	N/A
CONTINGENCY	N/A	N/A	N/A	N/A	N/A
<b>TOTAL COST</b>	<b>\$466,991.70</b>				
<b>FEDERAL SHARE</b>				\$ 373,593.36	
<b>STATE SHARE</b>				--	
<b>LOCAL SHARE</b>				\$ 93,397.64	
<b>REVISION HISTORY</b>					
Date	Revision Details				

